

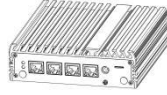
Network Security Platform

IEXP-304

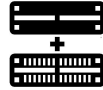
Intel® 12th Alder Lake-N processor
Network server



Features:



All-aluminum alloy structure, fanless cooling design



Support 3*M.2 slot (support SSD + WIFI + 4G/5G at the same time)



Dual Display

Support 4K high-definition dual display, 1*HDMI+1*DP display port



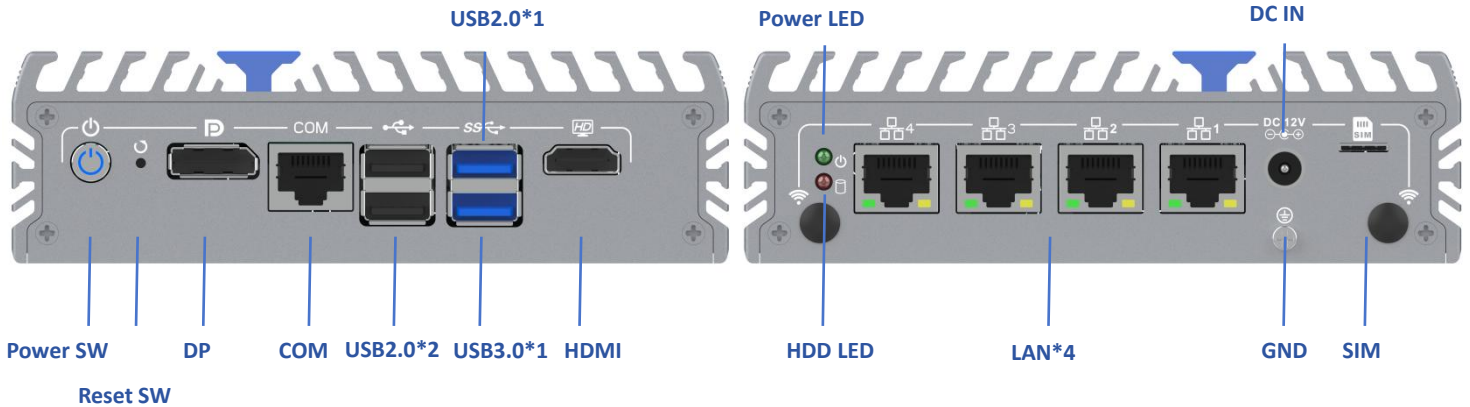
Multi-LAN

Support 4* Intel i226-V 2.5G LAN



COM

1*RJ45 COM (support Console function)



Optional Extensions

For more details, pls contact salesperson.



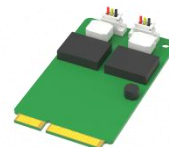
9 ~ 36V wide-voltage module



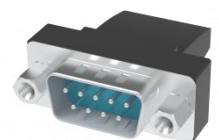
4G module



WIFI/Bluetooth



CAN card



COM

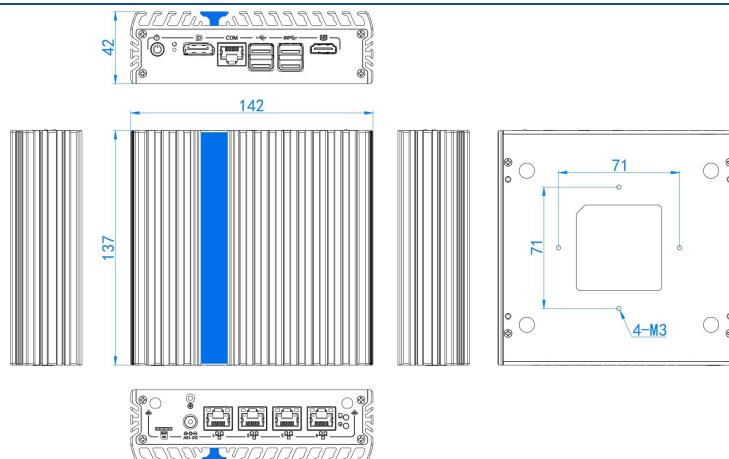
Specification

Parameter	
Processor	Onboard Intel N100 (quad core quad threads, Turbo 3.4 GHz)
Chipset	Alder Lake-N
Memory	Support 1*DDR4 3200MHz SODIMM slot, max 16 GB
Graphics Card	
Graphics Card	Integrated Intel(R) UHD Graphics (Support synchronous and asynchronous dual display)
Display Port	1*HDMI (Resolution up to 4096 x 2160 @ 60Hz)
	1*DP (Resolution up to 4096 x 2160 @ 60Hz)
Ethernet	4*Intel i226-V 100/1000/2500M LAN
I/O	
USB	3*USB2.0,1*USB3.1
COM	1*RJ45 (support Console)
Switch buttons	1*power switch,1*Reset button
Power supply	1 * DC (5.5*2.5mm) , support 12V input
Other Function	Power on when there is electricity, network wake up,
	timed startup,PXE startup (0 ~ 255level) ,TPM2.0

Storage	
M.2	1*M.2 2280 M-key slot (support SATA)
SATA	1*2.5 inch SSD slot
Expansion Slots	
M.2	Support 1*M.2 2280 M-key slot (SATA)
	Support 1*M.2 2230 E-key slot (support WIFI/BT)
	Support 1*M.2 3052 B-key (USB3.0 protocol, support 4G/5G) , SIM slot external
Internal ports	2 * USB2.0 optional (Standard shipments do not come with these interfaces)
Dimension	142 * 137 * 42 mm /14.2x13.7x4.2 cm/5.6 x 5.4 x 1.7 inch
Weight	0.79 kg / 790g / 1.74lb
Installation	VESA, Wall-mounted, Din-rail (optional)
Environmental Index	
Operating Temperature	-20℃ ~ +50℃, Surface air flow
Operating Humidity	5% ~ 95% Non-condensing state
Application	
Firewall, VPN, network server	
Network security, router., etc	

Drawing

Unit: mm



Order Information

Order configuration	Spec
Config 1	Intel® Processor N100 standard ports

Note: When use WIFI and 4G/5G module together, Antenna fixing holes need digging, any question pls contact salesperson

Packing List

Parts Name	Quantity	Parts Specs
Power Adapter	1	12V 4A / 12V 5A
Power cable	1	CN, US, UK, EU., etc(Optional)
Certificate, Warranty Card, VESA	1	"SMATIPC" trade mark